

AVC-VNN41AVLT
4MP H.265 NETWORK IR WATER-PROOF DOME CAMERA



4MP H.265 NETWORK IR WATER-PROOF DOME CAMERA

4MP H.265 NETWORK IR WATER-PROOF DOME CAMERA

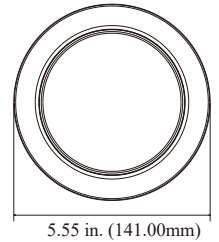
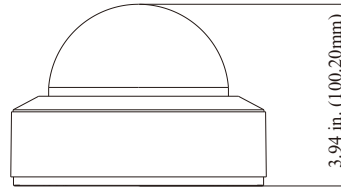
The AVYCON AVC-VNN41AVLT camera is a 4MP H.265 Vandal Dome Camera. This 4MP IP camera supports True Day and Night mode, PoE, and up to 164ft. of Smart IR Illumination, and also incorporates an InfiniteStar sensor which allows viewing of video in the lowest of light environments, even in color. This camera includes a Motorized 2.8~12mm Lens with Auto-focus capabilities that can be controlled through a NVR. Also standard with this series is Digital NR, ROI, HLC, True WDR, and BLC capabilities along with IP67 outdoor rating. Optional accessories for this camera include a Junction Box Mount. Includes a MicroSD memory card slot for standalone recording applications.

FUNCTIONS

- 4MP (2592 × 1520) @ 30fps
- Max. Resolution: 2592 × 1520
- Supports Smart H.265+/H.265/H.264+/H.264/MJPEG Coding
- ICR Auto Switch, True Day/Night Vision
- 98ft to 164ft (30 ~ 50m) IR Night View Distance
- Motorized Zoom Lens
- 3D DNR, True WDR, HLC, BLC, Defog, Smart IR and ROI Coding
- Support Image Distortion Correction
- Built-in Micro SD Card Slot; Up to 256GB
- DC12V/PoE Power Supply
- IP67 & IK10
- Support Triple Streams
- Support Remote Monitoring by Smart Phones & Tablet PCs with iOS and Android OS
- Intelligent Analytics

DIMENSIONS

Unit : inch (mm)



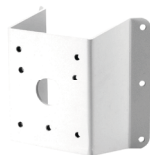
OPTIONAL ACCESSORIES



AVM-MDMT-W-TL1
 JUNCTION BOX



AVM-MWMT-W-TL1
 WALL MOUNT



AVM-P-CMT
 CORNER MOUNT BRACKET



AVM-P-PMT
 POLE MOUNT BRACKET



AVC-VNN41AVLT

4MP H.265 NETWORK IR WATER-PROOF DOME CAMERA

SPECIFICATIONS

CAMERA				
Image Sensor	1/3" Progressive Scan CMOS			
Resolution	4MP			
Image Size	2592 × 1520			
Electronic Shutter	Auto/manual; manual mode: 1 / 2s ~ 1 / 100000 s			
Iris Type	DC Iris			
Min. Illumination	0.005 lux@F1.6, AGC ON; 0 lux with IR			
Lens	2.8~12mm@F1.3, motorized			
Field of View	Horizontal: 100.0°~28.9°; Vertical: 54.5°~16.7°; Diagonal: 104.8°~33.1°			
Lens Mount	Ø14			
Day & Night	ICR			
WDR	120dB			
BLC	Yes			
HLC	Yes			
Defog	Yes			
S/N Ratio	≥50dB			
Digital NR	3D DNR			
Angle Adjustment	Pan: 0°~345°; Tilt: 0°~77°; Rotation: 0°~345°			
IMAGE				
Video Compression	Main stream: H.265+ / H.265 / H.264+ / H.264 Sub stream: H.265+ / H.265 / H.264+ / H.264 / MJPEG Third stream: H.265+ / H.265 / H.264+ / H.264 / MJPEG			
H.264 Compression Standard	Baseline Profile/Main Profile/High Profile			
Resolution	4MP (2592×1520), 2K(2560×1440), 3MP(2304×1296), 1080P(1920×1080), 720P (1280 × 720), D1, CIF, 480 × 240, VGA(640 × 480)			
Main Stream	4MP/2K/3MP/1080P / 720P (60Hz : 1 ~ 30fps; 50Hz: 1~25fps) HFR mode: 1080P / 720P(60Hz : 1 ~ 60fps; 50Hz: 1~50fps)			
Sub Stream	720P/D1/CIF/VGA (60Hz : 1 ~ 30fps; 50Hz: 1~25fps)			
Third Stream	D1/CIF/480×240 (60Hz : 1 ~ 30fps; 50Hz: 1~25fps)			
Bit Rate	64 Kbps ~ 8 Mbps			
Bit Rate Type	VBR / CBR			
Audio Compression	G711A / U			
Image Settings	ROI, Saturation, Brightness, Hue, Contrast, Wide Dynamic, Sharpness, Image Mirror, Image Flip, NR, etc. adjustable through client software or web browser			
ROI	Each ROI to be configured separately			
INTELLIGENT ANALYTICS				
Smart Event	Line crossing, region intrusion/entrance/exiting, loitering detection, illegal parking detection, abandoned/ missing object detection			
Statistics	Target counting by line/area, heat map			
Exception Detection	Scene change, video blur and abnormal color detection, audio exception			
Face Detection	Face detection and face capture			
Video Metadata	Simultaneously captures human body, motor vehicle and non-motor vehicle and extracts 13 human features, 5 motor vehicle features and 1 non-motorvehicle feature			
DORI DISTANCE				
Lens	Detect	Observe	Recognize	Identify
2.8~12mm(W)	58.91m(193.27 ft)	23.56m(77.29 ft)	11.78m(38.64 ft)	5.89m(19.32ft)
2.8~12mm(T)	205.99m(675.82ft)	82.40m(270.34ft)	41.20m(135.17ft)	20.60m(67.58ft)
INTERFACES				
Network	RJ 45 10M/100M self-adaptive Ethernet port			
Video Output	CVBS output (BNC × 1)			
Audio	1CH audio input; 1CH audio output; 1CH built-in MIC			
Storage	Built-in micro SD card slot; up to 256GB			
Reset	Yes			
Alarm	1CH alarm input; 1CH alarm output			
FUNCTION				
Remote Monitoring	Web Browser/AVYCON CVMS 2.0/mobile APP			
Web Browser	IE11(plug-in required)/Chrome 89.0+/Edge 89.0+/Firefox 87.0+/Safari 14.0+			
Online Connection	Support simultaneous monitoring for up to 10 users; Support multi-stream real time transmission			
Network Protocol	UDP, IPv4, IPv6, DHCP, NTP, RTSP, RTP, RTMP, RTCP, PPPoE, DDNS, SMTP, FTP, SNMP, HTTP, HTTP POST, 802.1x, UPnP, HTTPS, QoS			
Interface Protocol	ONVIF(profile S, G, T, M)			
Storage	Network remote storage; micro SD card storage			
Smart Alarm	Motion detection, sensor detection, SD card error, SD card full, IP address conflict, cable disconnection			
General Function	Watermark, video mask, heartbeat, image distortion correction, corridor pattern			
Security	Video encryption, firmware encryption, HTTPS encryption, configuration encryption, illegal login lock, IP address filtering, 802.1x authentication, basic and digest authentication for HTTP/RTSP			
PoE	Yes, IEEE802.3af			
IR Distance	98ft~164ft (30~50m)			
Ingress Protection	IP67& IK10			
OTHER				
Power Supply	DC12V/PoE			
Power Consumption	< 9W			
Storage Conditions	- 30 °C ~ 65°C (-22°F~149°F), Humidity: less than 95 % (non-condensing)			
Operating Conditions	- 30 °C ~ 60 °C (-22°F~140°F), Humidity: less than 95 % (non-condensing)			
Dimensions (mm)	Φ5.6in x 3.94in(Φ 141 × 100.2mm)			
Weight	Approx. 2.05lbs			
Installation	Ceiling mounting; Wall mounting			
Certificate	CE, FCC			
Environmental Protection	Directive EU RoHS, WEEE(2012/19/EU), directive 94/62/EC and REACH(EC1907/2006)			



AVYCON

Copyright © AVYCON. All rights reserved. Specifications and pricing are subject to change without notice.

phone: 949-752-7606

email: info@avycon.com

social: @avycon_aivo

website: avycon.com